

Key Indicators on the competitiveness of the EU'S automotive Industry¹

Table of contents

Part 1: Comparison EU, U.S. and Japan

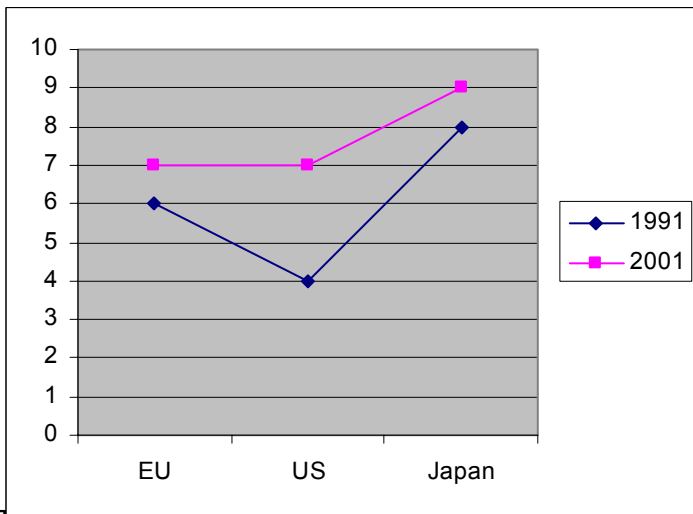
1. Value added	Page 2
2. Employment	Page 3
3. Labour productivity levels and growth	Page 3
4. Labour Costs	Page 4
5. Production trends	Page 5
6. External trade performance	Page 6
7. Investment	Page 8
8. R&D	Page 9
9. Access to markets (market shares)	Page 10
10. Profitability	Page 10
11. Restructuring in the European, U.S. and Japanese car industry	Page 11
Part 2: Comparison old versus new EU Member States	Page 12

¹ All data from the European Competitiveness report 2004, unless otherwise indicated.

PART 1: Comparison EU, U.S. and Japan

1. Value added

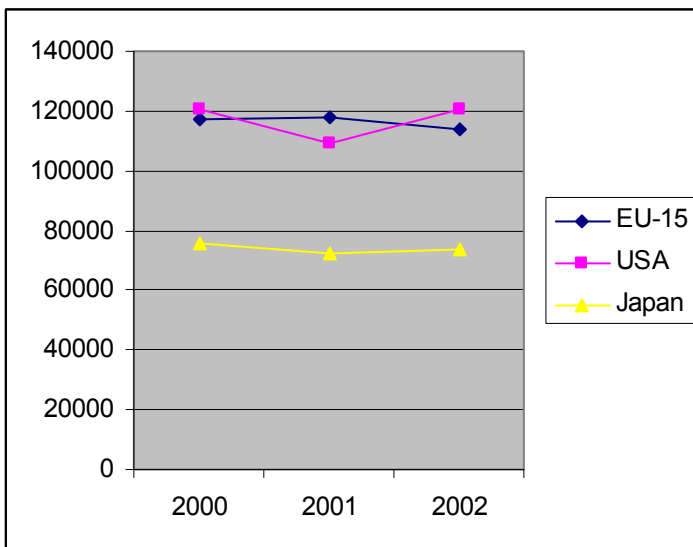
Value added motor vehicle industry (as % of value added in total manufacturing)



The above graphic in figures:

%	EU	US	Japan
1991	6	4	8
2001	7	7	9

Total value added in motor vehicle industry (in Million Euro)



The above graphic in figures:

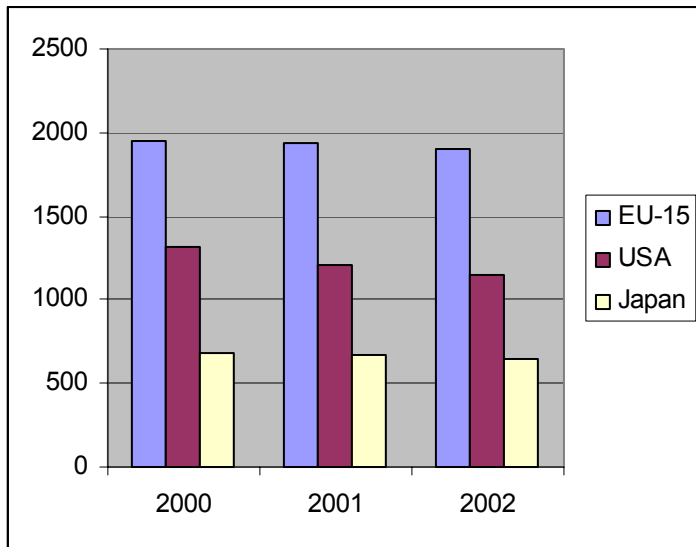
Million Euro	2000	2001	2002	% 2000-2002
EU-15	117.154	118.156	114.170	-2.55%
USA	120.400	109.334	120.800	+0.33%
Japan	75.408	72.041	73.855	-2.06%

EU compared to US and Japan:



2. Employment

Employment in motor vehicle industry (in Thousands)



The above graphic in figures

Thousands	2000	2001	2002	% 2000-2002
EU-15	1944	1933	1907	-1.90%
USA	1313	1212	1151	-12.34%
Japan	683	664	646	-5.42%

EU compared to US and Japan:



3. Labour productivity levels and growth

Labour productivity relative to the US level

<i>US=100</i>	Based on Automotive Unit Values			Based on expenditure PPPs		
	1990	1995	2001	1990	1995	2001
EU 15	59.6	65.9	75.2	71.7	69.0	75.3
Korea	19.4	32.3	33.7	36.4	37.6	46.0
Japan	131.8	110.8	108.8	78.4	82.4	101.7
USA	100.0	100.0	100.0	100.0	100.0	100.0

EU compared to US and Japan:



4. Labour Costs

*International comparison of hourly labour costs
(in PPP \$; current values)*

	1990	1995	2001
Korea	5.4	8.4	12.9
Japan	17.8	24.1	29.0
USA	25.4	34.3	33.8
EU 15	19.1	26.3	32.7
Austria	13.4	21.0	23.8
Belgium	20.7	27.9	31.5
Denmark	12.8	17.0	21.4
Finland	12.5	18.3	21.0
France	17.4	22.2	25.6
Germany	20.5	29.0	36.8
Greece	7.4	10.6	12.2
Ireland	9.5	13.1	17.5
Italy	17.0	21.4	23.9
Luxembourg	13.0	14.8	19.2
Netherlands	13.2	17.2	24.1
Portugal	8.1	14.7	18.3
Spain	17.9	19.4	23.3
Sweden	15.8	18.5	19.4
UK	17.9	22.3	26.2

*Difference between growth rates of value added
per hour and hourly labour costs*

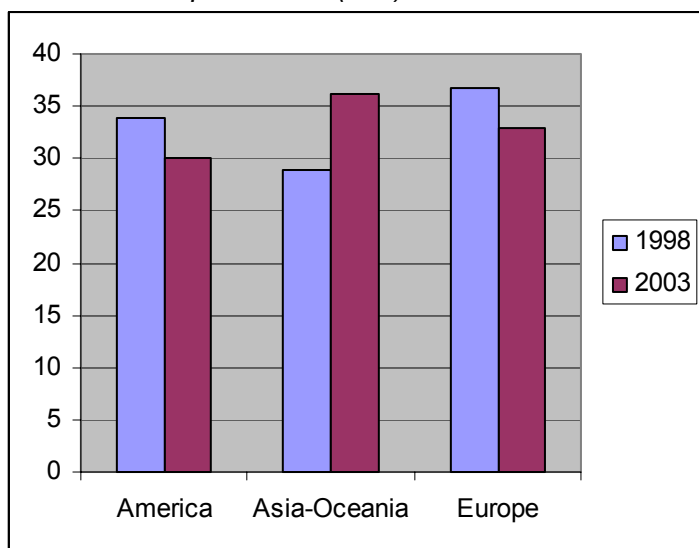
	1981- 1990	1991-1995	1996- 2001
Korea	-1.4	-2.4	1.6
Japan	-1.0	-2.9	1.3
USA	1.3	4.4	2.8
EU 15	1.7	0.5	-1.3

EU compared to US and Japan:



5. Production trends

Global vehicle production (in%)

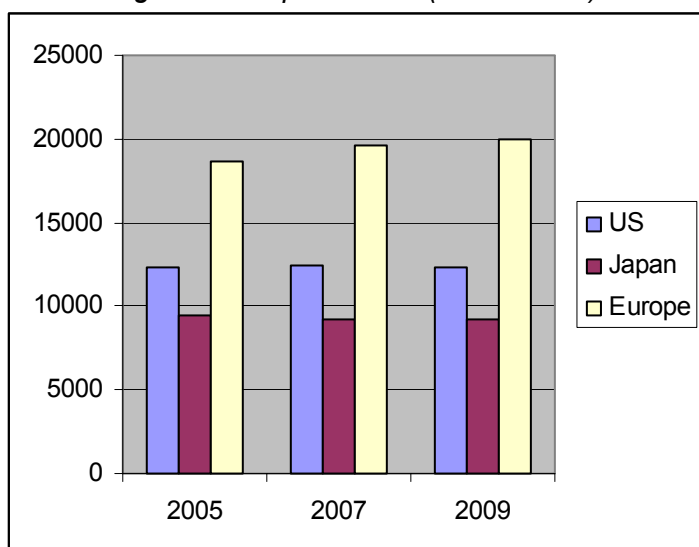


Source: OICA

The above graphic in figures:

<i>in %</i>	America	Asia-Oceania	Europe
1998	33.84%	28.82%	36.71%
2003	30.10%	36.25%	33.00%

Forecast light vehicle production (in thousand)



Source: Global Insight, March 2004

The above graphic in figures:

<i>in thousand</i>	2005	2007	2009	% 2005-2009
US	12275,1	12384,1	12378,3	+0,84%
Japan	9453,9	9234,2	9168,9	-3,02%
Europe	18625,5	19621,3	19992,8	+7,34%

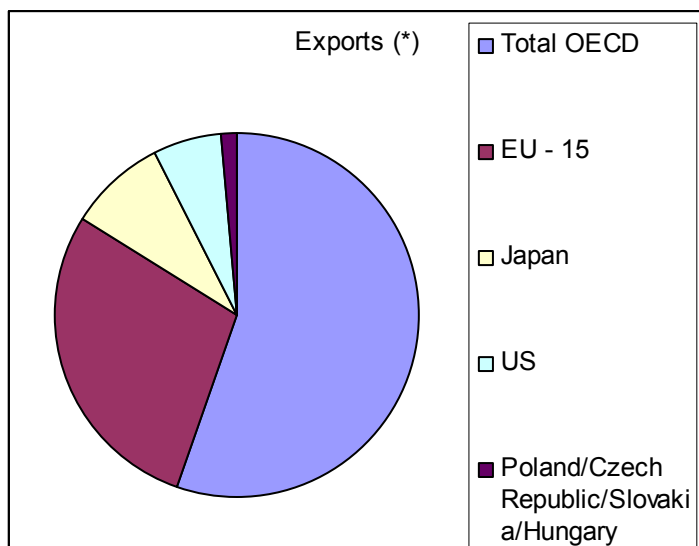
Global vehicle production by manufacturer (Cars and Trucks) – Output per units

		2002	2001	2000
1	General Motors ²	8.276.000	7.786.000	8.494.000
2	Ford Motor Co. ³	6.973.000	7.008.000	7.424.000
3	Toyota Motor Co. ⁴	6.309.616	5.848.094	5.888.260
4	Volkswagen AG ⁵	5.023.264	5.107.945	5.156.455
5	DaimlerChrysler AG ⁶	4.471.900	4.424.200	4.677.894
6	PSA/Peugeot-Citroen SA	3.262.100	3.136.300	2.877.400
7	Hyundai Motor Co. ⁷	2.913.726	2.517.719	2.545.958
8	Honda Motor Co.	2.900.787	2.651.661	2.485.213
9	Nissan Motor Co.	2.690.295	2.466.995	2.605.155
10	Renault SA ⁸	2.343.954	2.375.084	2.444.370

EU compared to US and Japan: 

6. External trade performance

Automotive products exports and imports of OECD countries (Year 2001 in billion US\$)



(*) EU -15 (figure includes 85 billion US\$ outside EU-15)

² includes Holden, Opel, Vauxhall and Saab.

³ includes Aston Martin, Jaguar, Land Rover and Volvo Car Corp.

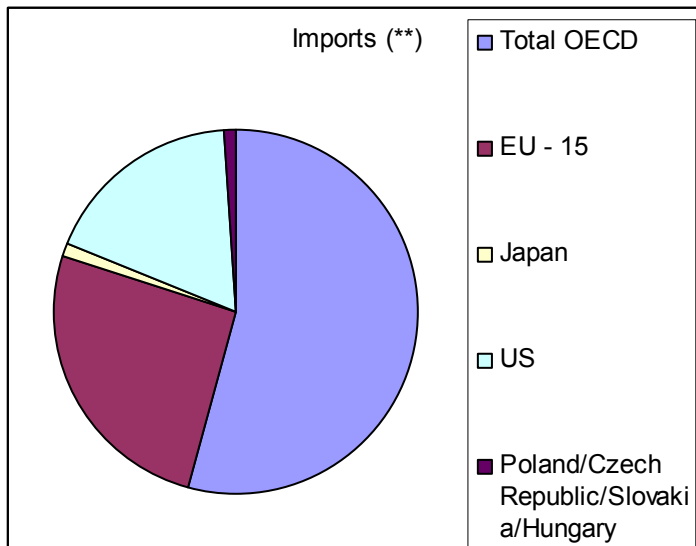
⁴ includes Daihatsu and Hino.

⁵ includes Audi, Bentley, Bugatti, Lamborghini, Rolls-Royce, Skoda, Seat and Volkswagen.

⁶ includes Chrysler group, Freightliner, Mercedes-Benz, Setra, Smart, Sterling, Thomas Built Buses and Western Star.

⁷ includes Hyundai Motors and Kia Motors.

⁸ includes Dacia and Samsung Motors.

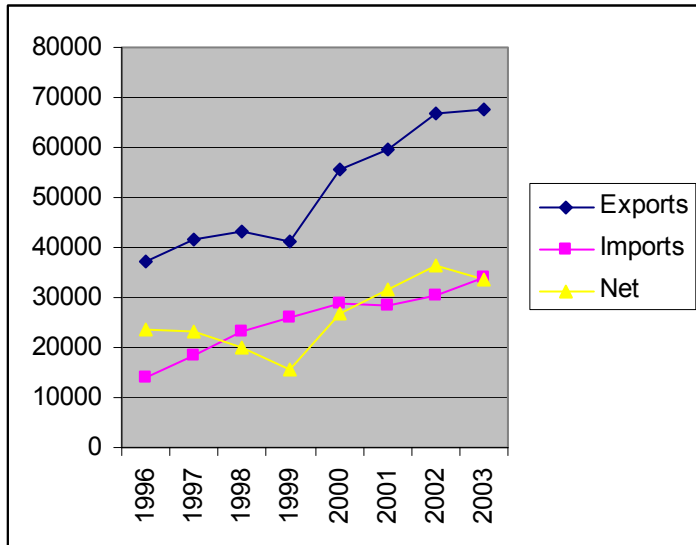


(**) EU -15 (figure includes 46 billion US\$ outside EU-15)

The above graphics in figures:

<i>Year 2001 in billion US\$</i>	Total OECD	EU-15	Japan	US	Poland/ Czech Republic/Slovakia/ Hungary
Exports	523	270 (85 outside EU- 15)	80,8	56,7	13,6
Imports	486	231 (46 outside EU- 15)	9,6	159	11

Motor vehicle exports/imports EU-15 in value (in million Euro)



Source: ACEA

The above graphic in figures:

EU-15 (in million EUR)	1996	1997	1998	1999	2000	2001	2002	2003
Exports	37.314	41.510	43.199	41.155	55.460	59.686	66.927	67.406
Imports	13.868	18.275	23.109	25.972	28.805	28.211	30.540	33.890
Net	23.446	23.235	20.090	15.584	26.654	31.475	36.387	33.515

EU compared to US and Japan: ↑

7. Investment

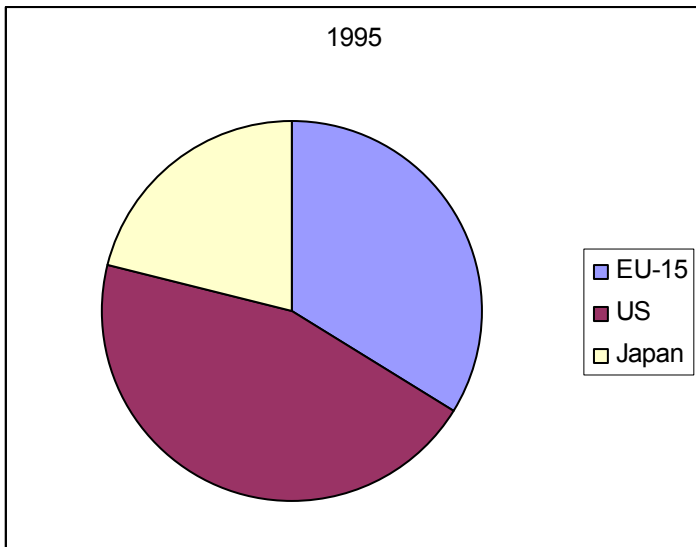
Investment levels in the motor vehicle industry

in million Euro	1995	2001
EU-15	16985	30512
Japan	12497	n/a
US	15813	n/a

EU compared to US and Japan: ↑

8. R&D

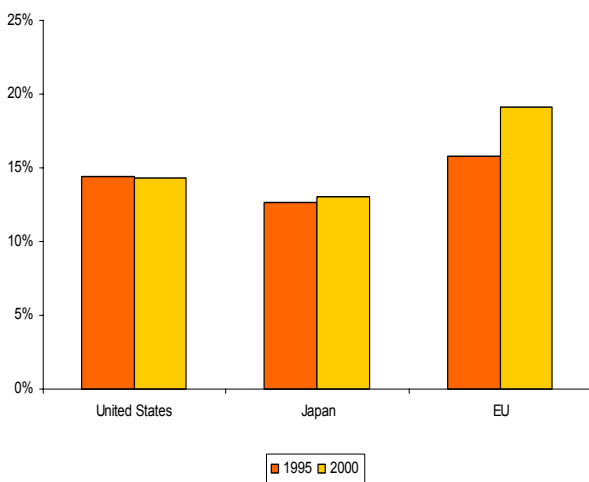
R&D expenditure in the motor vehicle industry (as % of total motor vehicle industry expenditure)



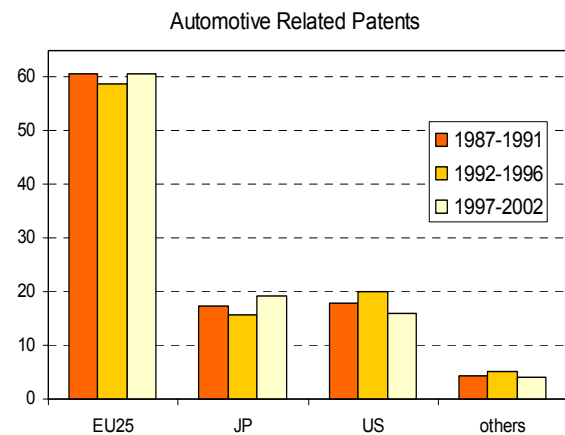
The above graphic in figures:

as % of total motor vehicle industry expenditure	EU-15	US	Japan
1995	34%	45%	21%
2000	38%	42%	20%

R&D expenditure in the motor vehicle industry 1995 and 2000 in % of total manufacturing



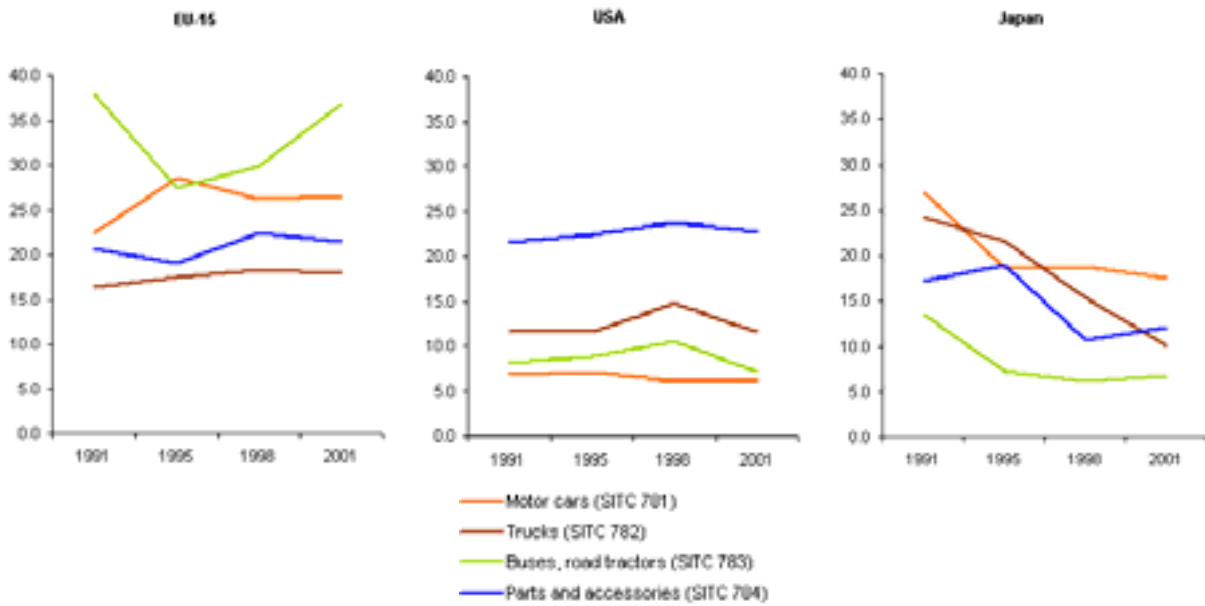
EPO Automotive Patents Applications



EU compared to US and Japan: ↑

9. Access to markets (market shares)

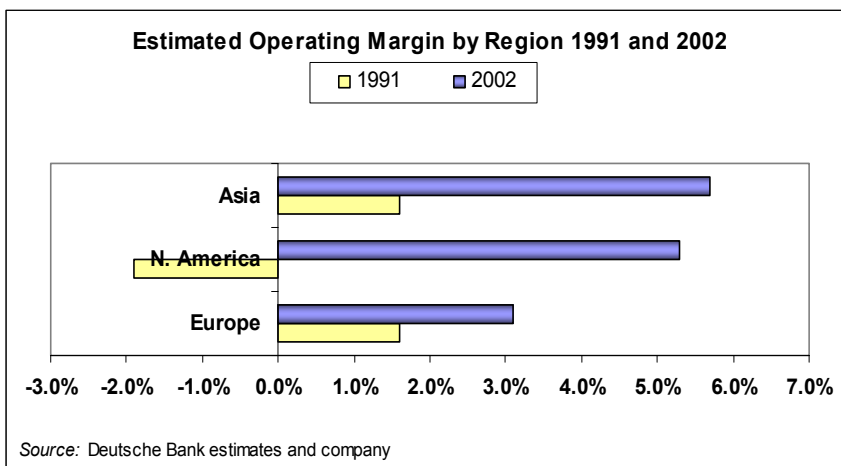
World market shares in % for EU-15, USA and Japan



EU compared to US and Japan:



10. Profitability

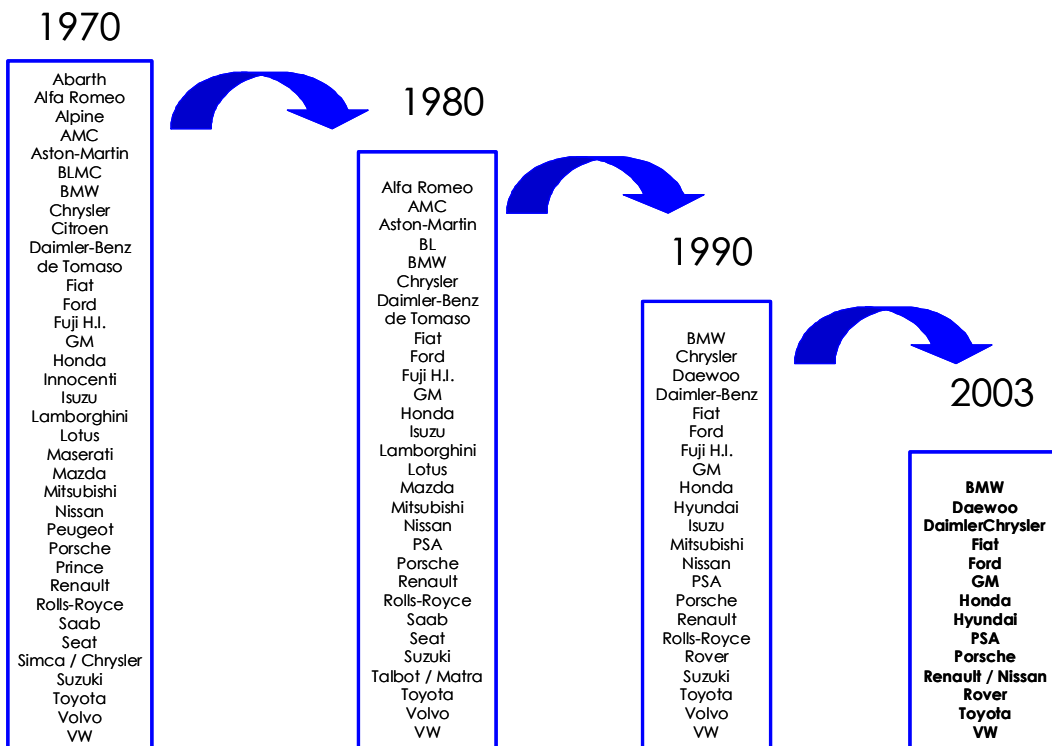


EU compared to US and Japan:



11. Restructuring in the European, U.S. and Japanese car industry

Restructuring in the European, U.S. and Japanese car industry⁹



⁹ Producers from China, India and Russia are not included, given the lack of comparable historical information.

PART 2: Comparison old versus new EU Member States

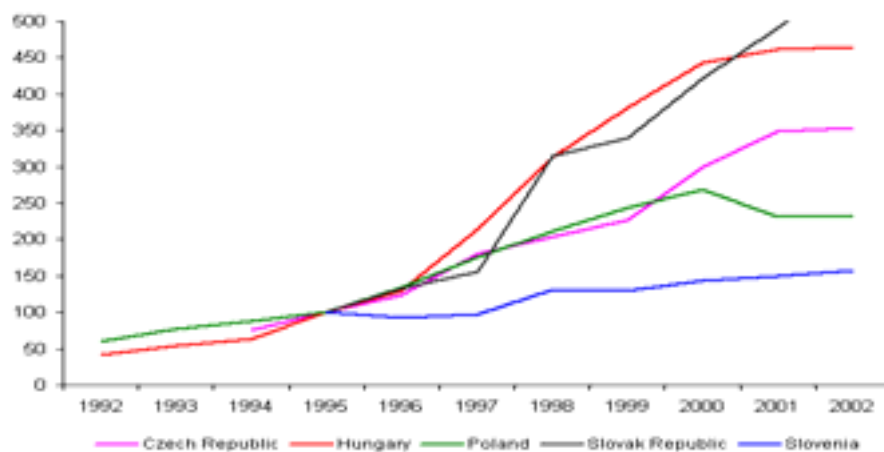
New Member States¹⁰

Employment(in thousand) in automotive industry in selected new Member States

	1996	1997	1998	1999	2000	2001	2002
CZ	57,5	62,3	67,9	69,1	78,5	84,5	87,0
EE	1,9	1,8	1,6	1,3	1,3	1,5	-
HU	24,7	29,2	33,2	32,1	33,2	36,1	36,1
LV	2,2	1,5	0,6	0,6	0,4	0,6	-
LT	2,6	2,1	0,9	0,5	0,4	0,3	-
PL	100,5	105,1	107,9	100,1	96,5	86,1	78,0
SK	13,3	13,7	14,1	14,2	14,7	15,8	18,2
SI	7,7	7,3	7,6	7,0	6,6	6,9	7,0

Source: Background Report to European Competitiveness Report 2004

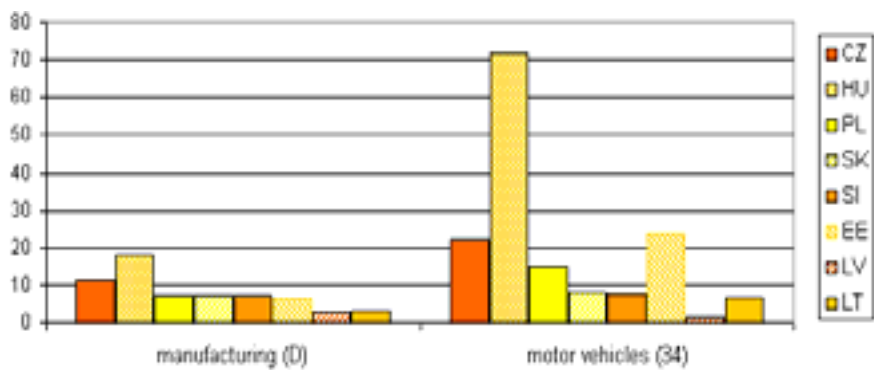
Industrial production index for the automotive industry in selected new Member States (at constant prices 1999, national currency; 1995 = 100)



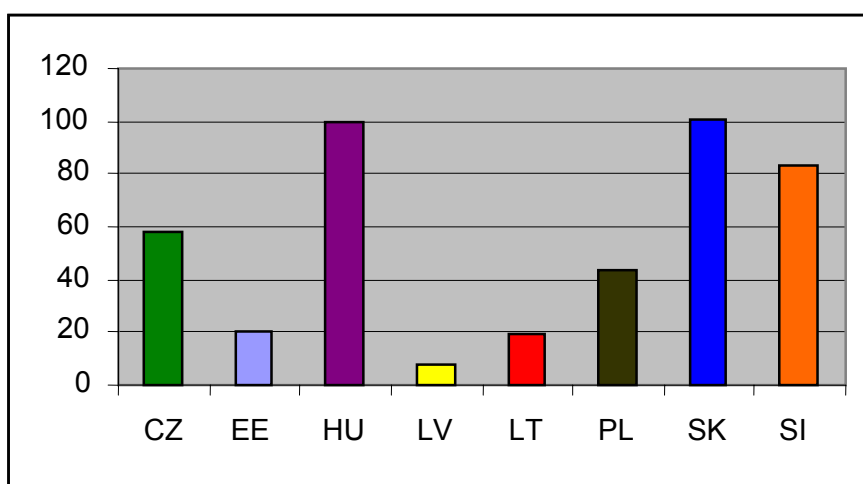
Source: Background Report to European Competitiveness Report 2004

¹⁰ (all figures from European Competitiveness Report 2004, unless otherwise indicated)

Inward foreign direct investment stock per employee in selected new Member States (2001/2002)



Labour productivity (2001) in automotive industry in selected new Member States as percentage of EU-15 (=100)



Unit labour costs (2001) in automotive industry in selected new Member States as percentage of EU-15 (=100)

